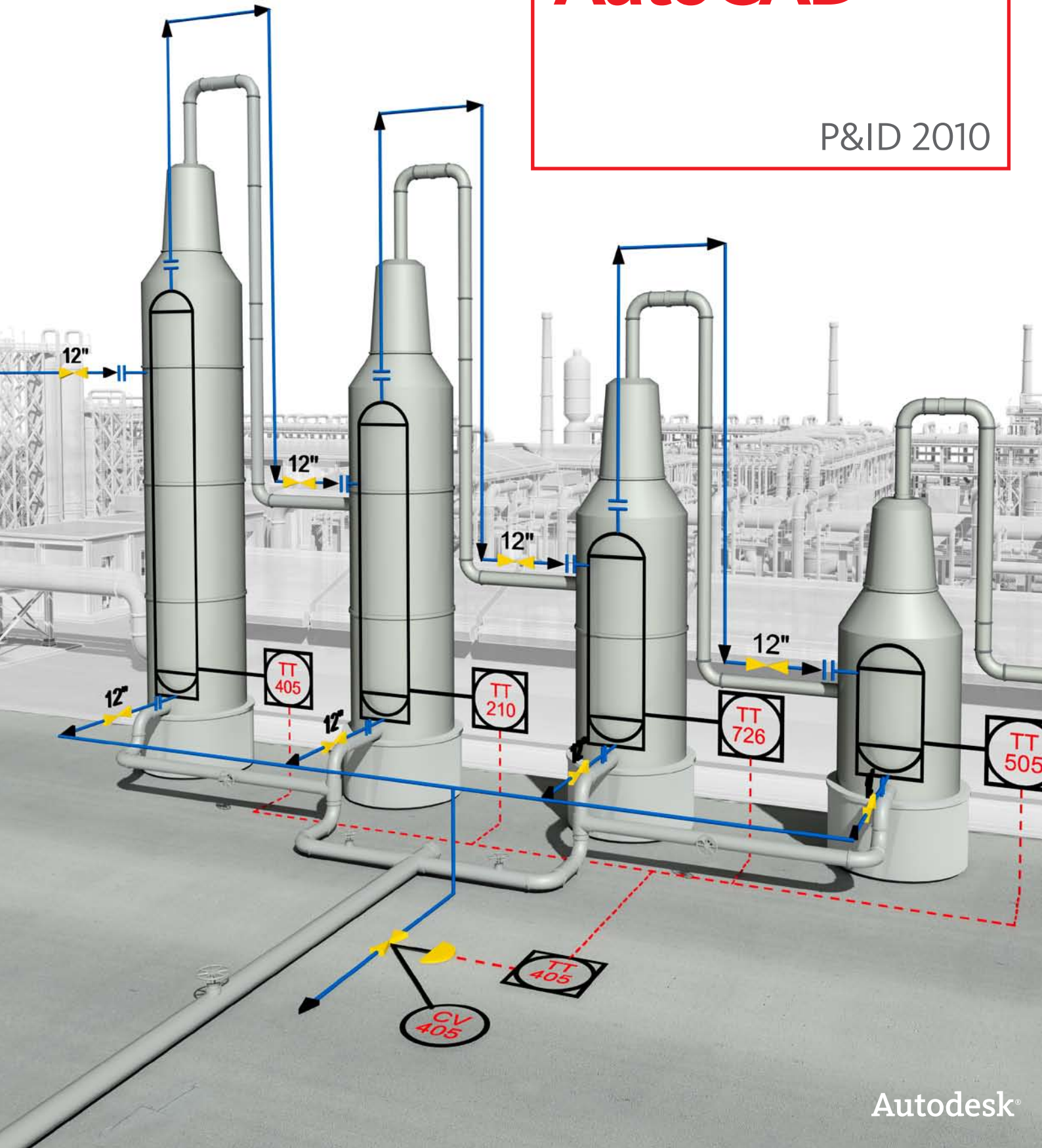


Easy does it.

**AutoCAD**<sup>®</sup>

P&ID 2010



# It's How AutoCAD Does P&IDs



Create, modify, and manage piping and instrumentation diagrams with AutoCAD P&ID 2010 software.

**Start easier. Run better. Finish sooner.**

With simple reporting, editing, sharing, validation, and exchange of design information, AutoCAD P&ID 2010 software helps your projects start easier, run better, and finish sooner.

**Familiar to designers and engineers.**

Using the intuitive interface and standard AutoCAD-based functionality, AutoCAD-trained professionals can start using AutoCAD P&ID right away.

**Easy to use and saves time.**

Developed specifically for P&ID designers and engineers, AutoCAD P&ID includes a collection of tools to automate and simplify many of the detailed design and editing tasks performed everyday.

**Keeps project information accurate and accessible.**

Whether you need to generate in-drawing reports or export information across an entire project, AutoCAD P&ID includes many features to support fast, accurate completion of each step, while ensuring data integrity in the face of constant design changes and modifications.

Built on the latest AutoCAD platform, AutoCAD P&ID is easy to use and familiar to designers and engineers, so your design team can start immediately with minimal training. Everyday tasks are streamlined and automated to boost productivity, while component and line information is easily accessed as you work.

**Project Manager**

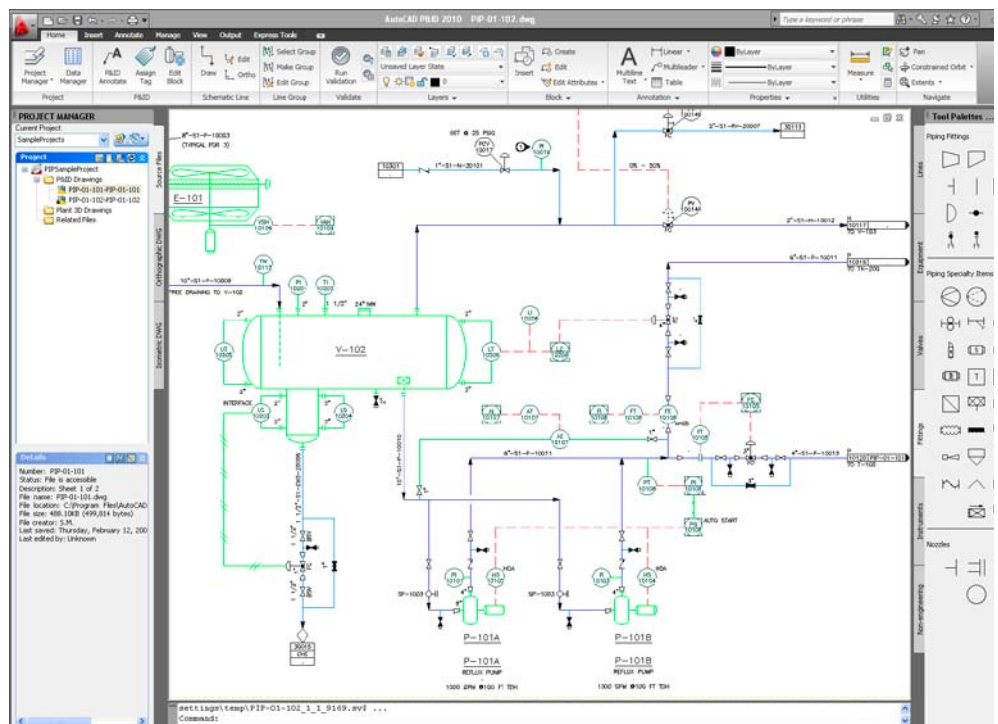
Easily set up projects and preview drawings with straightforward organization and management of DWG™ files.

**Data Manager**

Sort and organize underlying P&ID data for easy referencing and see specific information in the context of the drawing.

**Symbol Libraries**

Place snap-to industry-standard symbols (PIP, ISA, JIS, and ISO/DIN), as well as symbols customized for specific company or client needs directly into drawings.

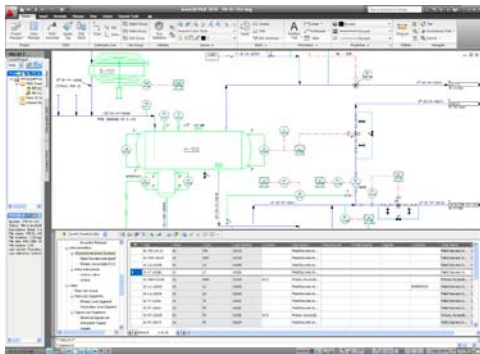


**AutoCAD P&ID is built on the familiar AutoCAD platform.**



### Dynamic Lines and Components

Lines and components are dynamic with AutoCAD P&ID. Reduce manual breaking and mending of lines with intuitive grip editing and manipulation. Create, move, and snap lines into place. Lines automatically break, maintain flow direction, and attach to components that are inserted on, or attached to, the line. When a component is removed, lines mend automatically. Quickly move and snap components with dynamically linked properties and information in place without the burden of manually editing underlying data.



The Data Manager makes P&ID information readily accessible for referencing and editing.

### Tagging and Annotations

Easily create, edit, and customize tags and annotations in industry-standard formats. Simply drag data properties from the Data Manager into the P&ID drawing as annotations that automatically update.

### Validation Tool

Perform error checking with the Validation tool to identify, navigate to, and highlight inconsistencies in the drawing. Help to ensure accuracy and dramatically reduce the time required to identify potential inconsistencies in piping and instrumentation diagrams.

### Data Management and Reporting

Easily report, edit, exchange, and share project engineering information, and know the impact of external data updates for better management. Export data into drawing data tables as well as various file formats such as Microsoft® Excel® software. Quickly sort and organize information for easy referencing. Enhanced change management, viewing, and editing functionality help ensure that nothing slips through the cracks.

1	Tag	Area	Type	Loop Number	Location	Description	Comment	Class Name	P&ID
2	01-TW-00132	01	TW	00132		Field Discrete Instrument		Field Discrete Instrument	1490
3	01-WS-02020	02	WS	02020		Field Discrete Instrument		Field Discrete Instrument	1508
4	01-LS-00105	01	LS	00105		Field Discrete Instrument		Field Discrete Instrument	1492
5	01-LT-00096	01	LT	00096		Field Discrete Instrument		Field Discrete Instrument	1494
6	01-NA-00008	02	NA	00008		Primary Access/In DCS		Primary Access/In DCS	1526
7	01-LS-00019	01	LS	00019		Field Discrete Instrument		Field Discrete Instrument	1496
8	01-LS-00014	01	LS	00014		Field Discrete Instrument		Field Discrete Instrument	1498
9	01-NA-00008	02	NA	00008		Primary Access/In DCS		Primary Access/In DCS	1526
10	01-PS-00015	01	PS	00015		Field Discrete Instrument		Field Discrete Instrument	1502
11	01-FC-00105	01	FC	00105		Primary Access/In DCS		Primary Access/In DCS	1528
12	01-NA-00008	02	NA	00008		Primary Access/In DCS		Primary Access/In DCS	1526
13	01-PS-00015	01	PS	00015		Field Discrete Instrument		Field Discrete Instrument	1504
14	01-PS-00015	01	PS	00015		Field Discrete Instrument		Field Discrete Instrument	1504
15	01-PS-00015	01	PS	00015		Field Discrete Instrument		Field Discrete Instrument	1508
16	01-NA-00008	02	NA	00008		Field Discrete Instrument		Field Discrete Instrument	1502
17	01-NA-00008	02	NA	00008		Field Discrete Instrument		Field Discrete Instrument	1512
18	01-NA-00008	02	NA	00008		Field Discrete Instrument		Field Discrete Instrument	1514
19	01-NA-00008	02	NA	00008		Field Discrete Instrument		Field Discrete Instrument	1516
20	01-NA-00008	02	NA	00008		Field Discrete Instrument		Field Discrete Instrument	1518
21	01-NA-00008	02	NA	00008		Field Discrete Instrument		Field Discrete Instrument	1520
22	01-NA-00008	02	NA	00008		Field Discrete Instrument		Field Discrete Instrument	1522
23	01-NA-00008	02	NA	00008		Field Discrete Instrument		Field Discrete Instrument	1524
24	01-NA-00008	02	NA	00008		Field Discrete Instrument		Field Discrete Instrument	1526
25	01-NA-00008	02	NA	00008		Field Discrete Instrument		Field Discrete Instrument	1528
26	01-NA-00008	02	NA	00008		Field Discrete Instrument		Field Discrete Instrument	1530
27	01-NA-00008	02	NA	00008		Field Discrete Instrument		Field Discrete Instrument	1532
28	01-NA-00008	02	NA	00008		Field Discrete Instrument		Field Discrete Instrument	1534
29	01-NA-00008	02	NA	00008		Field Discrete Instrument		Field Discrete Instrument	1536
30	01-NA-00008	02	NA	00008		Field Discrete Instrument		Field Discrete Instrument	1538
31	01-NA-00008	02	NA	00008		Field Discrete Instrument		Field Discrete Instrument	1540
32	01-NA-00008	02	NA	00008		Field Discrete Instrument		Field Discrete Instrument	1542
33	01-NA-00008	02	NA	00008		Field Discrete Instrument		Field Discrete Instrument	1544
34	01-NA-00008	02	NA	00008		Field Discrete Instrument		Field Discrete Instrument	1546
35	01-NA-00008	02	NA	00008		Field Discrete Instrument		Field Discrete Instrument	1548
36	01-NA-00008	02	NA	00008		Field Discrete Instrument		Field Discrete Instrument	1550
37	01-NA-00008	02	NA	00008		Field Discrete Instrument		Field Discrete Instrument	1552
38	01-NA-00008	02	NA	00008		Field Discrete Instrument		Field Discrete Instrument	1554
39	01-NA-00008	02	NA	00008		Field Discrete Instrument		Field Discrete Instrument	1556
40	01-NA-00008	02	NA	00008		Field Discrete Instrument		Field Discrete Instrument	1558
41	01-NA-00008	02	NA	00008		Field Discrete Instrument		Field Discrete Instrument	1560
42	01-NA-00008	02	NA	00008		Field Discrete Instrument		Field Discrete Instrument	1562
43	01-NA-00008	02	NA	00008		Field Discrete Instrument		Field Discrete Instrument	1564
44	01-NA-00008	02	NA	00008		Field Discrete Instrument		Field Discrete Instrument	1566
45	01-NA-00008	02	NA	00008		Field Discrete Instrument		Field Discrete Instrument	1568
46	01-NA-00008	02	NA	00008		Field Discrete Instrument		Field Discrete Instrument	1570
47	01-NA-00008	02	NA	00008		Field Discrete Instrument		Field Discrete Instrument	1572
48	01-NA-00008	02	NA	00008		Field Discrete Instrument		Field Discrete Instrument	1574
49	01-NA-00008	02	NA	00008		Field Discrete Instrument		Field Discrete Instrument	1576
50	01-NA-00008	02	NA	00008		Field Discrete Instrument		Field Discrete Instrument	1578
51	01-NA-00008	02	NA	00008		Field Discrete Instrument		Field Discrete Instrument	1580
52	01-NA-00008	02	NA	00008		Field Discrete Instrument		Field Discrete Instrument	1582
53	01-NA-00008	02	NA	00008		Field Discrete Instrument		Field Discrete Instrument	1584
54	01-NA-00008	02	NA	00008		Field Discrete Instrument		Field Discrete Instrument	1586
55	01-NA-00008	02	NA	00008		Field Discrete Instrument		Field Discrete Instrument	1588
56	01-NA-00008	02	NA	00008		Field Discrete Instrument		Field Discrete Instrument	1590
57	01-NA-00008	02	NA	00008		Field Discrete Instrument		Field Discrete Instrument	1592
58	01-NA-00008	02	NA	00008		Field Discrete Instrument		Field Discrete Instrument	1594
59	01-NA-00008	02	NA	00008		Field Discrete Instrument		Field Discrete Instrument	1596
60	01-NA-00008	02	NA	00008		Field Discrete Instrument		Field Discrete Instrument	1598
61	01-NA-00008	02	NA	00008		Field Discrete Instrument		Field Discrete Instrument	1600
62	01-NA-00008	02	NA	00008		Field Discrete Instrument		Field Discrete Instrument	1602
63	01-NA-00008	02	NA	00008		Field Discrete Instrument		Field Discrete Instrument	1604
64	01-NA-00008	02	NA	00008		Field Discrete Instrument		Field Discrete Instrument	1606
65	01-NA-00008	02	NA	00008		Field Discrete Instrument		Field Discrete Instrument	1608
66	01-NA-00008	02	NA	00008		Field Discrete Instrument		Field Discrete Instrument	1610
67	01-NA-00008	02	NA	00008		Field Discrete Instrument		Field Discrete Instrument	1612
68	01-NA-00008	02	NA	00008		Field Discrete Instrument		Field Discrete Instrument	1614
69	01-NA-00008	02	NA	00008		Field Discrete Instrument		Field Discrete Instrument	1616
70	01-NA-00008	02	NA	00008		Field Discrete Instrument		Field Discrete Instrument	1618
71	01-NA-00008	02	NA	00008		Field Discrete Instrument		Field Discrete Instrument	1620
72	01-NA-00008	02	NA	00008		Field Discrete Instrument		Field Discrete Instrument	1622
73	01-NA-00008	02	NA	00008		Field Discrete Instrument		Field Discrete Instrument	1624
74	01-NA-00008	02	NA	00008		Field Discrete Instrument		Field Discrete Instrument	1626
75	01-NA-00008	02	NA	00008		Field Discrete Instrument		Field Discrete Instrument	1628
76	01-NA-00008	02	NA	00008		Field Discrete Instrument		Field Discrete Instrument	1630
77	01-NA-00008	02	NA	00008		Field Discrete Instrument		Field Discrete Instrument	1632
78	01-NA-00008	02	NA	00008		Field Discrete Instrument		Field Discrete Instrument	1634
79	01-NA-00008	02	NA	00008		Field Discrete Instrument		Field Discrete Instrument	1636
80	01-NA-00008	02	NA	00008		Field Discrete Instrument		Field Discrete Instrument	1638
81	01-NA-00008	02	NA	00008		Field Discrete Instrument		Field Discrete Instrument	1640
82	01-NA-00008	02	NA	00008		Field Discrete Instrument		Field Discrete Instrument	1642
83	01-NA-00008	02	NA	00008		Field Discrete Instrument		Field Discrete Instrument	1644
84	01-NA-00008	02	NA	00008		Field Discrete Instrument		Field Discrete Instrument	1646
85	01-NA-00008	02	NA	00008		Field Discrete Instrument		Field Discrete Instrument	1648
86	01-NA-00008	02	NA	00008		Field Discrete Instrument		Field Discrete Instrument	1650
87	01-NA-00008	02	NA	00008		Field Discrete Instrument		Field Discrete Instrument	1652
88	01-NA-00008	02	NA	00008		Field Discrete Instrument		Field Discrete Instrument	1654
89	01-NA-00008	02	NA	00008		Field Discrete Instrument		Field Discrete Instrument	1656
90	01-NA-00008	02	NA	00008		Field Discrete Instrument		Field Discrete Instrument	1658
91	01-NA-00008	02	NA	00008		Field Discrete Instrument		Field Discrete Instrument	1660
92	01-NA-00008	02	NA	00008		Field Discrete Instrument		Field Discrete Instrument	1662
93	01-NA-00008	02	NA	00008		Field Discrete Instrument		Field Discrete Instrument	1664
94	01-NA-00008	02	NA	00008		Field Discrete Instrument		Field Discrete Instrument	1666
95	01-NA-00008	02	NA	00008		Field Discrete Instrument		Field Discrete Instrument	1668
96	01-NA-00008	02	NA	00008		Field Discrete Instrument		Field Discrete Instrument	1670
97	01-NA-00008	02	NA	00008		Field Discrete Instrument		Field Discrete Instrument	1672
98	01-NA-00008	02	NA	00008		Field Discrete Instrument		Field Discrete Instrument	1674
99	01-NA-00008	02	NA	00008		Field Discrete Instrument		Field Discrete Instrument	1676
100	01-NA-00008	02	NA	00008		Field Discrete Instrument		Field Discrete Instrument	1678

Basic lists can be easily exported from AutoCAD P&ID to Microsoft Excel.

There is a high level of repeated information on a P&ID drawing and with the capabilities of the AutoCAD P&ID Data Manager, speed and accuracy is increased. We can simply cut and paste information from component to component.

—Howard Zoutkamp  
Project Engineer  
Sonneborn

The results are compelling—the ‘headline’ productivity gain was found to be in the region of 40%—and this outcome was based on a rigorous and wide-ranging test of AutoCAD P&ID capability.

—Tony Christian  
Cambashi Limited  
AutoCAD P&ID Productivity Study

Using AutoCAD P&ID software means that we can make the schematics and drawings faster than ever before. Everything we need is included in the software. Being able to create reports means we can make purchasing lists so our suppliers can produce prices for the equipment we need much more quickly. This enables us to deliver our quotations much earlier than we could have before.

—Kai Helge Hovland  
CAD Designer  
Ing Per Gjerdrum AS

#### **Learn More or Purchase**

Access specialists worldwide who can provide product expertise, a deep understanding of your industry, and value that extends beyond your software purchase. To purchase AutoCAD P&ID, contact an Autodesk Authorized Reseller. To locate the reseller nearest you, visit [www.autodesk.com/reseller](http://www.autodesk.com/reseller).

For more information about AutoCAD P&ID software, visit [www.autodesk.com/autocadpid](http://www.autodesk.com/autocadpid). To learn more about Autodesk Plant Solutions, visit [www.autodesk.com/plant](http://www.autodesk.com/plant).

#### **Autodesk Services and Support**

Accelerate return on investment and optimize productivity with innovative purchase methods, companion products, consulting services, support, and training from Autodesk and Autodesk authorized partners. Designed to get you up to speed and keep you ahead of the competition, these tools help you make the most of your software purchase—no matter what industry you are in. To learn more, visit [www.autodesk.com/servicesandsupport](http://www.autodesk.com/servicesandsupport).

#### **Autodesk Subscription**

Get the benefits of increased productivity, predictable budgeting, and simplified license management with Autodesk® Subscription. You get any new upgrades of your Autodesk software and any incremental product enhancements, if these are released during your subscription term, and you get exclusive license terms available only to subscription members. A range of community resources, including web support direct from Autodesk technical experts, self-paced training, and e-Learning, help extend your skills and make Autodesk Subscription the best way to optimize your investment. To learn more, visit [www.autodesk.com/subscription](http://www.autodesk.com/subscription).

\*Free products are subject to the terms and conditions of the end-user license agreement that accompanies download of the software.

Autodesk is committed to sustainability. This brochure is printed on 25 percent postconsumer waste recycled paper.

Autodesk, AutoCAD, and DWG are registered trademarks or trademarks of Autodesk, Inc., in the USA and/or other countries. All other brand names, product names, or trademarks belong to their respective holders. Autodesk reserves the right to alter product offerings and specifications at any time without notice, and is not responsible for typographical or graphical errors that may appear in this document.  
© 2009 Autodesk, Inc. All rights reserved. 448B1-000000-MZ01.